

Bateria

PANTALLES



Música: Marce·li García Peruga
Lletra: Mark Granell

Arreg. Javier Marimón

♩=125

2 3 4 5 6 7

mf

8 9 10 **A** 11 12 14 15 16 2

mf < f *mf < f*

18 19 **B** 20 21 22

mf

23 24 25 26 27

28 **C** 29 30 31 32 33

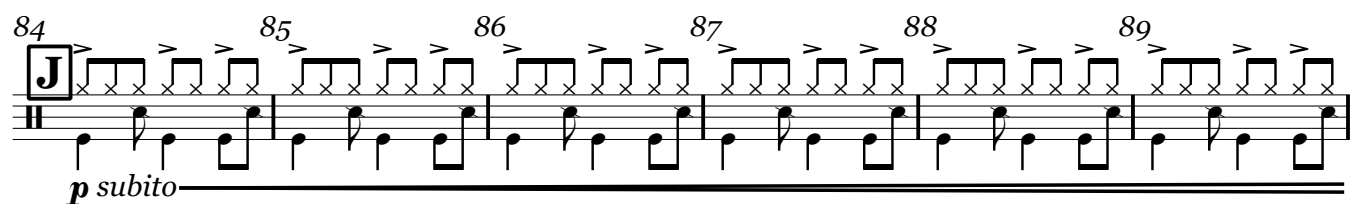
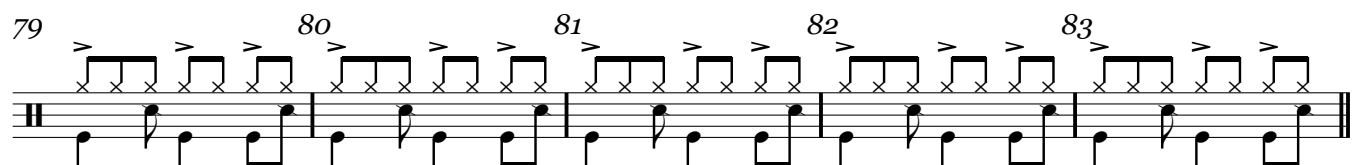
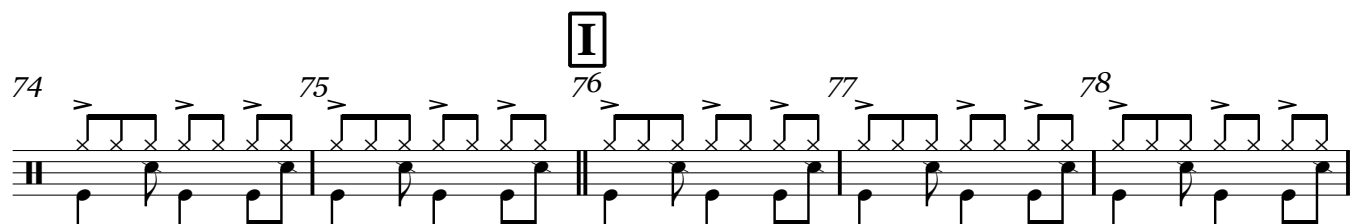
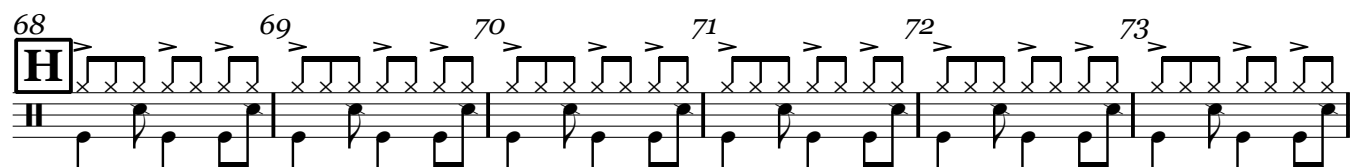
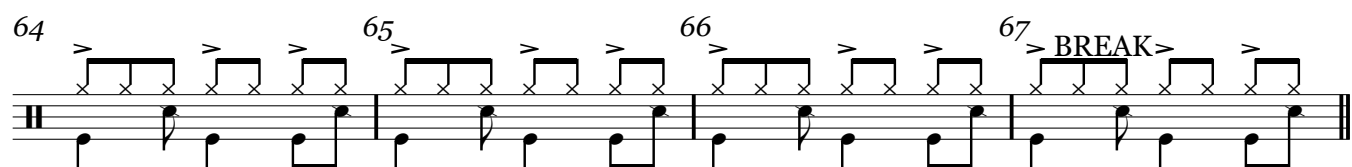
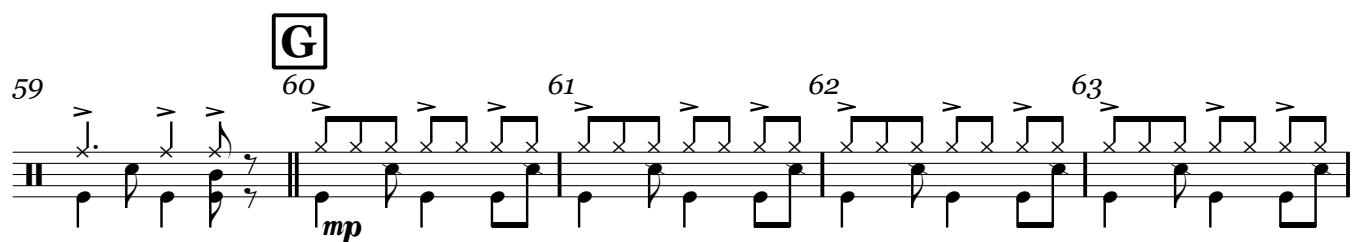
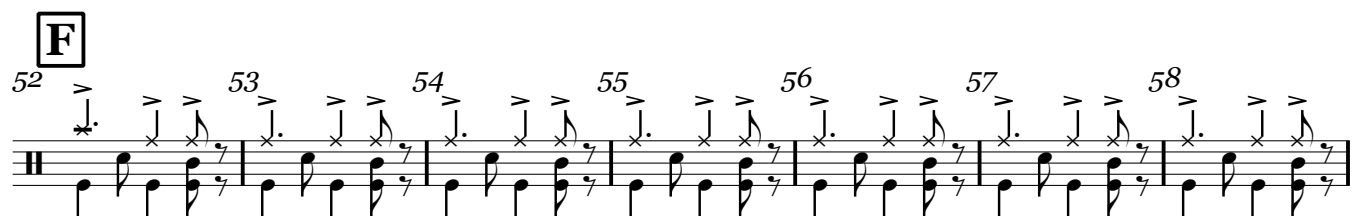
D

34 35 36 37 38 39 40

E

41 42 43 44 45 46

mf v.s.



90 91 92 93 94

K

mf

95 96 97 98 99 BREAK

100 101 102 103 104 105 106

L

107 108 109 110 111 112 113 114

M **Menos** ♩=120

mp

N

115 116 117 118 119

mp

poco accel.

120 121 122 123 BREAK

A tempo ♩=125

124 125 126 127 128 129 130

O

mf

131 132 133 134

P

f

V.S.

Musical score for Bateria, measures 135-147. The score is written on a single staff with a treble clef and a key signature of one sharp (F#). The time signature is 4/4. The notation includes eighth notes, quarter notes, and half notes, with many notes marked with an accent (>). Measures 135-139 show a rhythmic pattern of eighth notes and quarter notes. Measure 140 starts with a quarter note and a half note. Measure 141 is marked with a box containing the letter 'Q' and a double bar line. Measures 142-143 are marked with a '2' and a double bar line. Measure 144 is marked with 'rit..' and a double bar line. Measures 145-146 are marked with a '4' and a double bar line. Measure 147 ends with a half note and a double bar line.

135 136 137 138 139

140 141 **Q** 142 143 **rit..** 144 145 146 147